

Installation of fi-4110CU Scanner under Windows 2000

Connect the scanner to the PC. Turn on the scanner and then the PC

Log into Windows

Note: The user must log in with administrator authority. For information on Logging in with the proper authority, contact the system administrator

Windows should then detect the new device; if the scanner has been detected normally the following dialog box appears



For some models the above dialog box may not be displayed because an appropriate driver has automatically been installed as part of the operating system.

If this happens, perform the *Update Driver* procedure, later in this document

Confirm that the [Search for a suitable driver..] option has been selected and click the Next button

Insert the “Fujitsu Scanner Utility for Microsoft Windows” CD supplied with the scanner disk into the CD drive.

This document will assume the CD drive letter is D:

Use the correct driver to suit your system.

Note: If the CD attempts to Autorun – Click the Exit button on that window to stop the CD AutoRun-ing

The following screen is then displayed – Clear all the check boxes except the [Specify a Location] option, and then click the next button



In the dialog that is displayed, click the browse button and use the browser that pops up to navigate to this directory.

D:\Driver\win2k “Fujitsu Scanner Utility for Microsoft Windows” CD



Click the [OK] Button and confirm that the following screen is displayed



Click the [Next] and when the file has been copied the installation of the mini driver is complete and the following screen will be displayed - Click the [Finish] button



You will then be prompted to reboot the system.

Once the system has rebooted – Check that the driver has been installed correctly as follows:

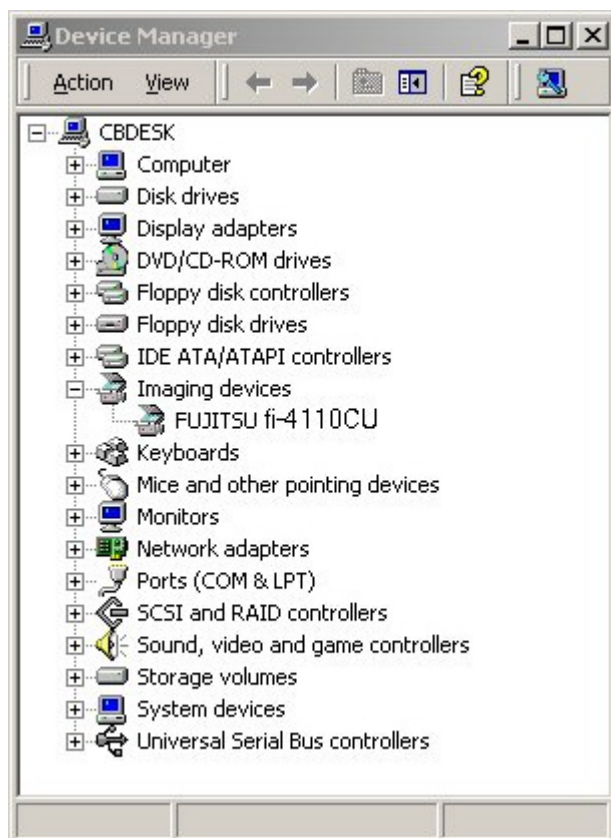
Right click on the My Computer icon on the desktop, select Properties from the drop down menu, select the Hardware tab and click the Device manager button. Move to the Imaging Devices leaf in the tree, click on the + sign to expand the section, The fi-4110CU should now be listed under that section without a yellow exclamation mark.

Installation of miniport driver is complete now go to the section “Installing Twain Driver.”

If the yellow exclamation mark appears continue to the “Update Driver” section of this document.

Update Driver

Right click on the My Computer icon on the desktop, select properties from the drop down menu, click the Hardware tab, and Click the Device Manager button. The following device manager window opens, click on the + sign of the Imaging Devices section – the fi-4110CU entry should be displayed.



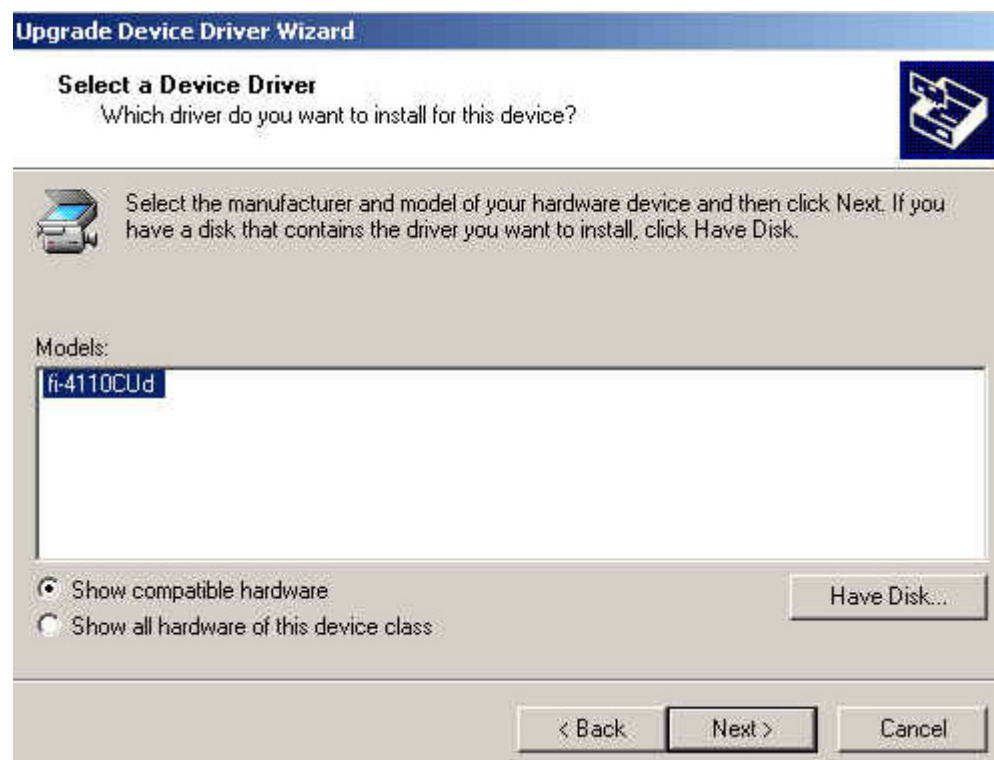
Right click on the text *Fujitsu fi-4110CU*, Select Properties from the drop down menu, on the Properties dialog box, select the Driver tab, then click on the [Update Driver] button. This starts the Upgrade Device Driver wizard, click [Next] to start the wizard.

Select [Display a list of known drivers] , click the [Next] button



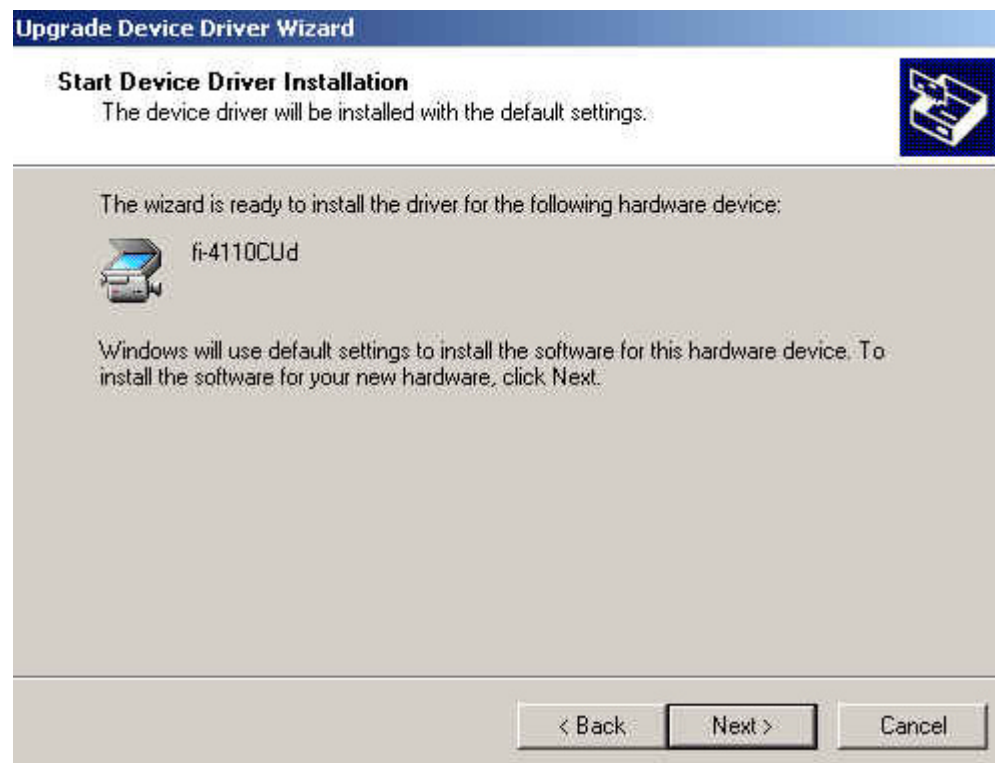
On the dialog box which pops up use the browse button to navigate to the directory *D:\Driver\Win2K* on the “Fujitsu Scanner Utility for Microsoft Windows” CD.

A list of available drivers will then be presented



Select fi-4110CU from the list presented, and click the [Next] button

The following dialog box will be displayed



Click the [Next] button, Installation starts and once the file has been copied and installation is completed the following screen will be displayed.

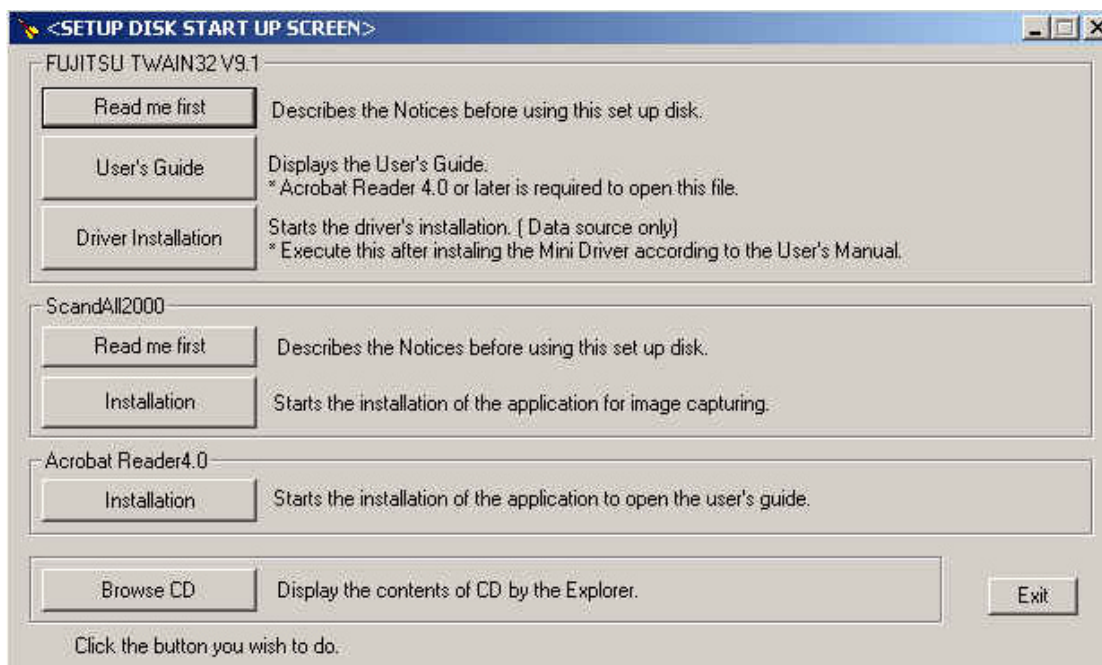


Click the [Finish] button, the system will then prompt to be re-started, follow the on screen instruction to restart the system.

Installation of the Twain Data Source

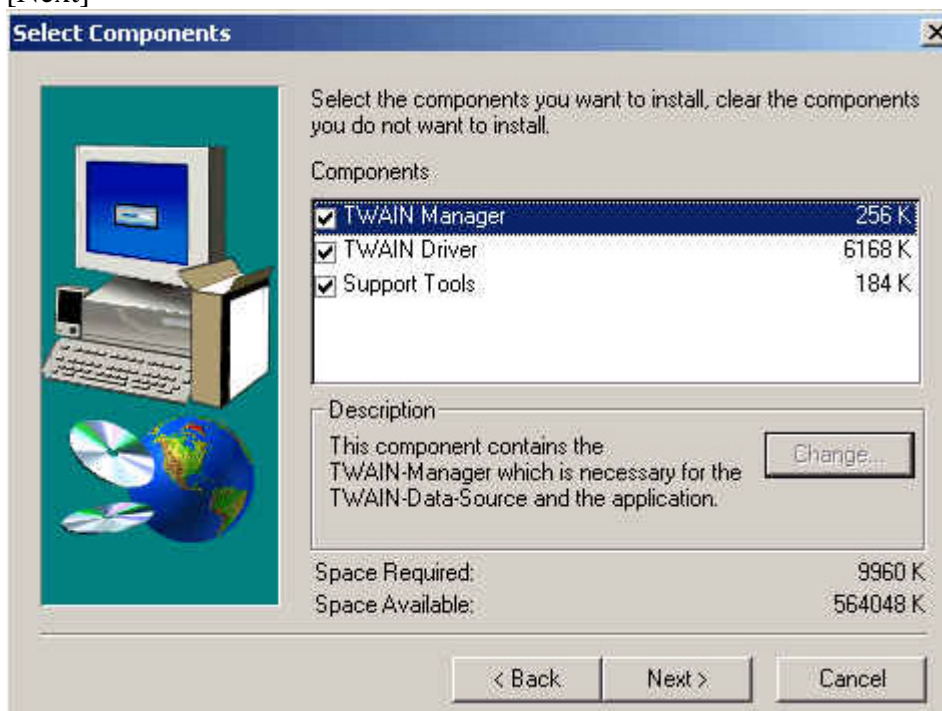
Insert the “Fujitsu Scanner Utility for Microsoft Windows” CD into CDrom drive.

The Autorun will display the dialog box below

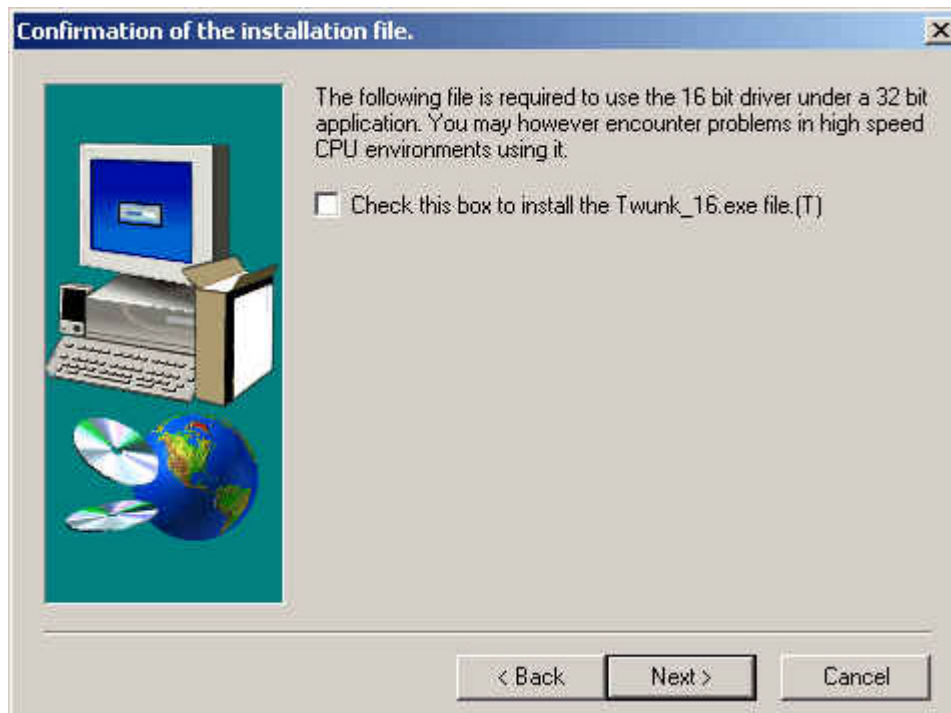


Click the “Driver Installation” button and follow the on screen instructions.

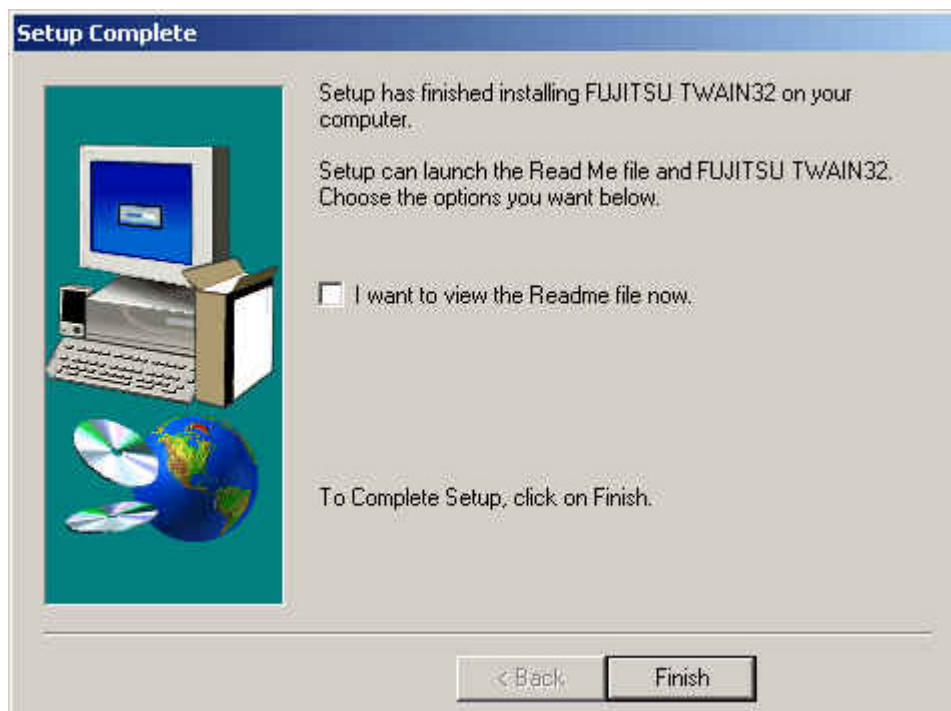
When the dialog box below appears make sure all components are selected and click [Next]



Be sure that at the next screen “Twunk_16” is not selected and press [Next]



Continue to follow the instructions on screen until the dialog box below appears



Uncheck the “Readme” file box and click [Finish]

The “Twain Data Source” has now been installed.